



insidetrack



# Coaching Solutions for Student & Institutional Success

## Why InsideTrack?

InsideTrack is passionate about student success. Since 2001, we have been dedicated to partnering with colleges and universities to create adaptive coaching solutions that generate measurable results.

These solutions combine professional coaching, technology and data analytics to increase enrollment, completion, and career readiness. Our adaptive coaching methodology is based on the latest behavioral science research and knowledge gained from working with more than 1.3 million students and 1,600 programs.

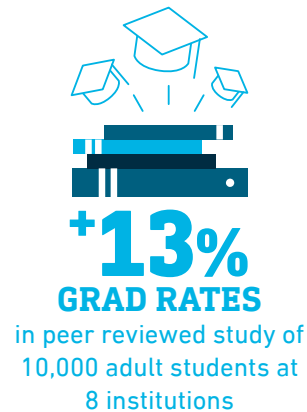
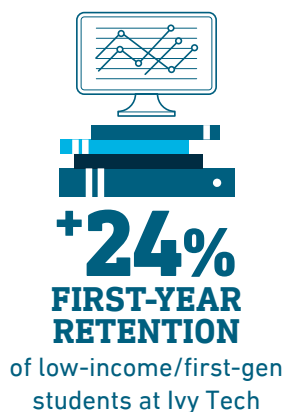
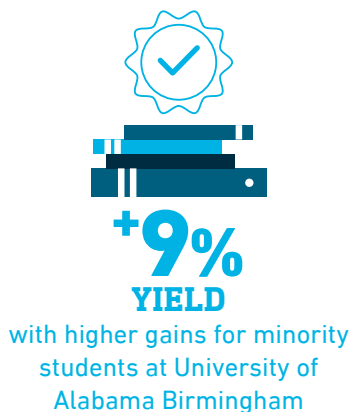
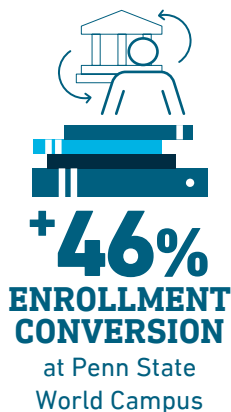
In combination with our uCoach® Platform, our approach optimizes student engagement and generates valuable insights on the student experience through predictive modeling, behavioral analysis and multichannel communication.

**"The results are clear: Coaching has a clear impact on retention and completion rates. Moreover, the expenditure is much smaller than that which would be required under an alternative policy."**

— Dr. Eric Bettinger, Stanford University School of Education

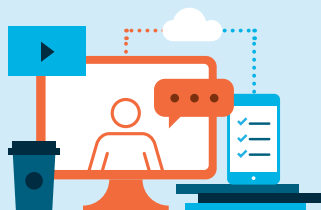
## Tangible results

Our work is regularly cited by government officials, policy bodies and the press as an example of a cost-effective, evidence-based approach to improving outcomes in higher education. Our impact has earned us a reputation as one of the most innovative education companies in the world:



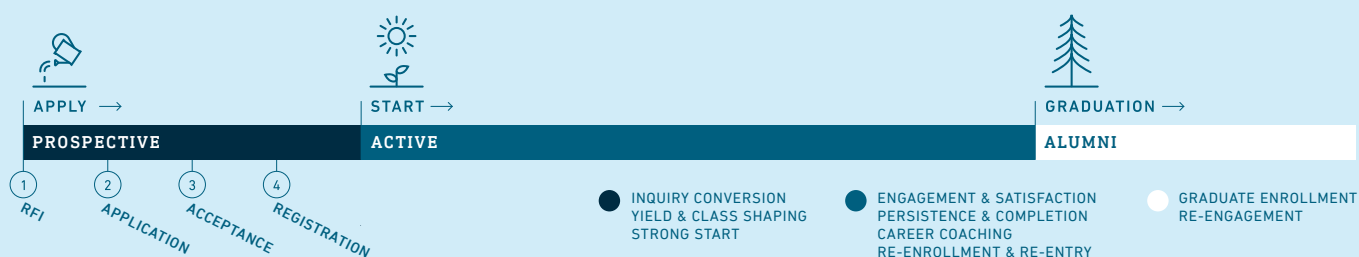
## Our solutions

Our adaptive solutions empower students and institutions to continually improve and thrive. Join us and the leading institutions, foundations and others working to bring the transformative power of education to all individuals.



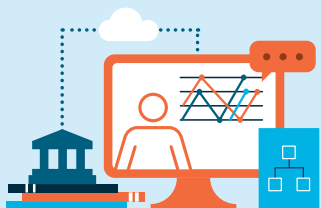
### InsideTrack Coaching Programs

InsideTrack Coaching Programs improve enrollment, completion and career readiness. Coaches work with students to help them develop the knowledge, skills, attitudes and beliefs they need to succeed in college and beyond. These programs provide valuable insights for institutions on the student experience. They are adaptive, technology-enabled and scalable to meet the needs of each institution.



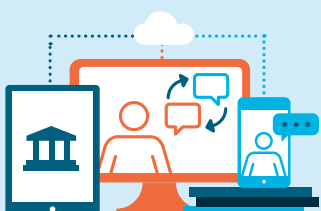
### InsideTrack Training and Consulting

InsideTrack's personalized, project-based Training and Consulting services support institutions in measurably improving student success. They include assessments, training, strategic planning, secret shopping and more.



### InsideTrack Capacity Building

InsideTrack Capacity Building is a comprehensive, customizable process for building and optimizing student support functions that combines InsideTrack's Coaching Programs, our uCoach Platform, and Training and Consulting.



### The InsideTrack uCoach Technology and Analytics Platform

The InsideTrack uCoach Technology and Analytics Platform optimizes student engagement, generates valuable, measurable insights on the student experience and enables the delivery of highly adaptive support at scale.